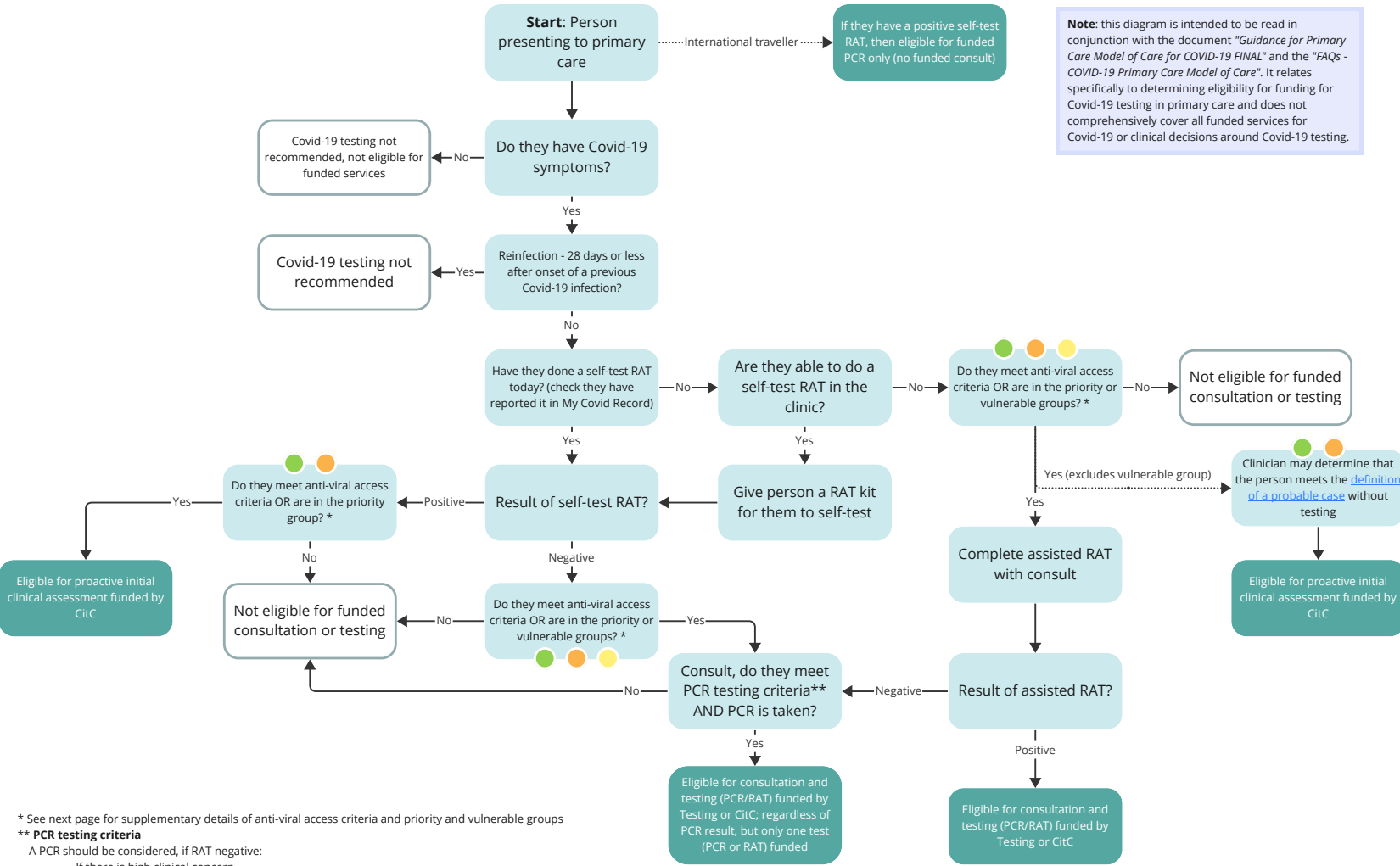


Decision Tree for primary care to assess Covid-19 testing funding eligibility

Note: this diagram is intended to be read in conjunction with the document "Guidance for Primary Care Model of Care for COVID-19 FINAL" and the "FAQs - COVID-19 Primary Care Model of Care". It relates specifically to determining eligibility for funding for Covid-19 testing in primary care and does not comprehensively cover all funded services for Covid-19 or clinical decisions around Covid-19 testing.



* See next page for supplementary details of anti-viral access criteria and priority and vulnerable groups

**** PCR testing criteria**

- A PCR should be considered, if RAT negative:
- If there is high clinical concern
 - For complex patients (e.g. immunocompromised)

Supplement: groups who may be eligible for Covid-19 testing funding in primary care

Simplified version, for full details please refer to the document "*Guidance for Primary Care Model of Care for Covid-19 FINAL*"

Anti-viral access criteria



Any one or more of:

- Age 65 or over
- Māori and Pacific peoples 50 and over
- 50 and over and not fully vaccinated
- Impaired immune system (immunocompromised)
- Down Syndrome
- Sickle cell disease
- 3 or more high-risk medical conditions

Priority populations



Any one or more of:

- Age 65 or over
- Māori and Pacific peoples
- Some disabled people
- People with severe mental health and addiction issues
- Other inequitably impacted population groups, including:
 - Refugees and asylum seekers
 - Remote and rural people
 - Rough sleepers
 - People in transitional housing
 - People not enrolled in a primary care practice

Vulnerable populations



- People with high-risk medical conditions (long-term health conditions and/or immunocompromised)
- Older people (aged over 65)
- Māori and Pacific people with co-morbidities