

**Te Whatu Ora**  
Health New Zealand

**Te Aka Whai Ora**  
Māori Health Authority

# Localities Update

February 2023

# The Vision

To build a health system that achieves Pae Ora healthy futures for all New Zealanders



# How the reforms expect the system to be different

1

## **The new health system will honour Te Tiriti o Waitangi.**

Māori will be empowered to design health services that better meet the needs of Māori and those that use kaupapa Māori health services.

2

## **People will be able to get the healthcare they need closer to home.**

Health services will better reflect community needs and preferences, there will also be a focus on helping people stay well by addressing things that help people live a healthy life.

3

## **High-quality or specialist care will be available when people need it.**

Networks of doctors and other healthcare professionals will work with community services to educate and get people well.

4

## **Digital technology will be used in more and better ways.**

People will be better able to access services in their homes, hapori and local communities.

5

## **Plan for the future of our healthcare workforce.**

Training and development will be provided so our healthcare workers will always have the skills they need.

- A locality is a geographical area that is home to a community with their own specific health and social needs and aspirations that the system will plan and arrange services to meet.
- Localities give iwi, mana whenua, hāpori Māori and communities a strong voice in deciding what's needed in their
- together better to improve people's health and wellbeing.
- By July 2024, every community in New Zealand will be part of a locality.
- Te Whatu Ora will support all people living in localities to say what they need to live well in and thrive in their communities.

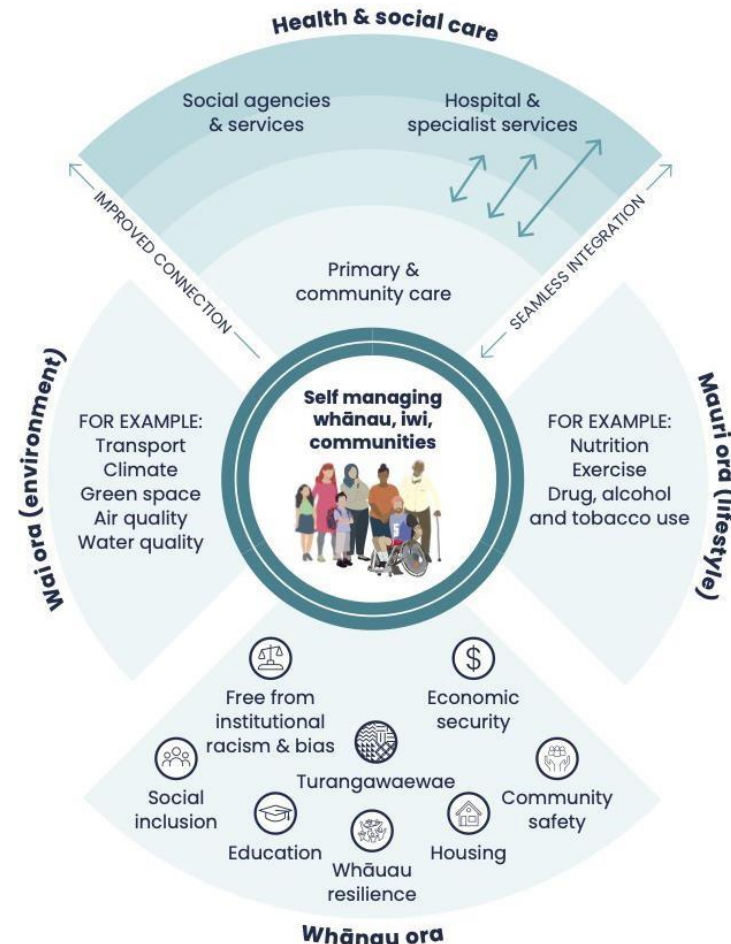
## What is a locality?

- local area.
- Localities enable different health and wellbeing organisations to work
- Iwi-Māori Partnership Boards will ensure whānau Māori living in a locality are supported to say what they need.

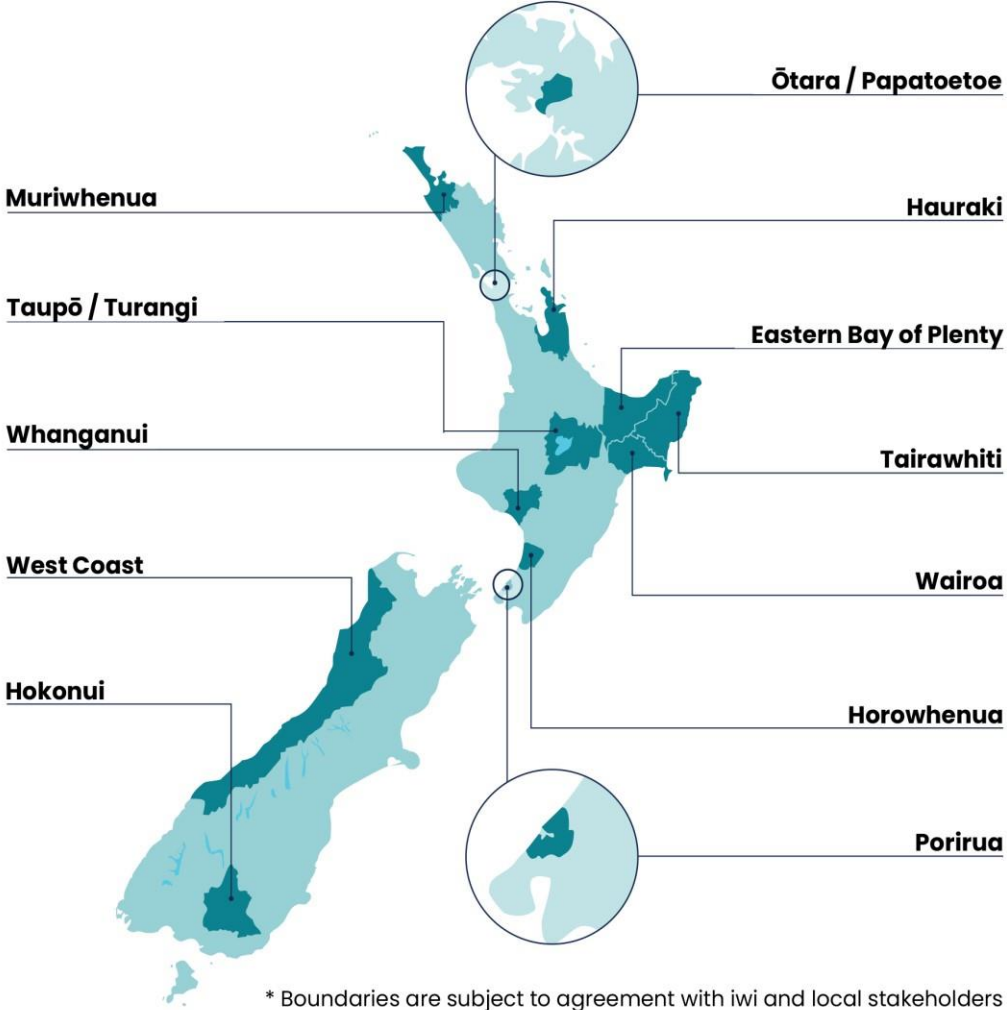
# Localities seek to embed a population health approach

The Locality approach recognises that if we can create better connections across health and social care agencies, we can better promote health and wellbeing and lift the health outcomes of entire communities.

Localities will embed a population health approach where Wai Ora, Mauri Ora and Whānau Ora are all addressed through the social determinants of health – the circumstances in which people are born, grow, live, learn, work and age, to improve outcomes.



# 12 Locality Prototypes



\* Boundaries are subject to agreement with iwi and local stakeholders

# Prototyping a Locality Development Process

## 1. Locality Determination

Engaging IMPBs, local government and communities to determine locality boundaries.  
Build local relationships.

## 2. Locality establishment

Support local stakeholders to establish local working arrangements that support collective action.  
Document working arrangements into a locality charter.

## 3. Locality planning

Engage with whānau, and communities to identify wellbeing needs and priorities to inform locality plans.  
Partner with IMPBs, Te Whatu Ora and Te Aka Whai Ora.

## 4. Delivery

Align contract and funding arrangements to locality plans and start delivery.  
Implement new models of care and community wellbeing initiatives.  
Improve service integration through better networked providers.

# Locality boundary determination process

## Boundary determination steps for each Iwi Māori Partnership Board area



### **STEP ONE - Iwi Māori Partnership Board recommendations**

Iwi Māori Partnership Board makes recommendations to Te Aka Whai Ora and Te Whatu Ora for locality boundaries in their rohe.



### **STEP TWO – Local authority engagement**

Te Whatu Ora will engage local authorities in that Iwi Māori Partnership Board area on locality boundaries.



### **STEP THREE – Board initial boundary approval**

Te Whatu Ora and Te Aka Whai Ora Boards agree on initial boundaries. Iwi Māori Partnership Boards recommendations and local authority discussions will be considered for each locality.



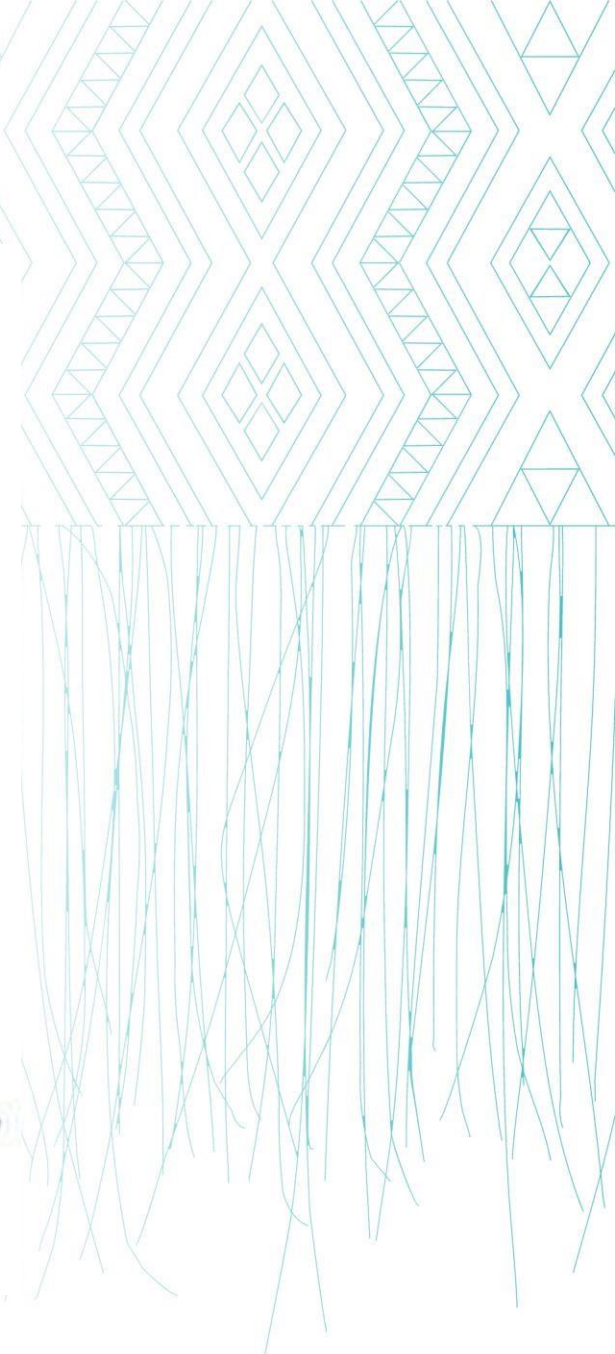
### **STEP FOUR – Community and whānau voice**

Whānau Māori and the community will be asked whether the initial boundary makes sense to them to ensure their collective voices inform the process. The area needs to have a local feel for the people that live there.



### **STEP FIVE - Final boundary determination**

Taking into consideration the IMPBs recommendations, local authority and community views, Te Whatu Ora and Te Aka Whai Ora agree and publish the final boundaries to meet the requirements of the Pae Ora Act. If the boundary has changed from the first recommendation, the IMPB will be included in this step.







# Support Framework for Localities Development

- Locality Collaboration Hub – online platform
- Learning & Insights Programme (Sapere / Malatest / Collaborative Aotearoa)
- The Locality Learning Collaborative – series of hui, communities of practice
- Advisory – locality development - policy and systems settings change – machinery of govt. • Strategic facilitation
- Communications and Media
- Digital

- Programme Management

# National localities team (1/2)



**Abbe Anderson**  
Te Whatu Ora  
National Director  
Commissioning



**Mara Andrews**  
Te Aka Whai Ora DCE  
Service Development &  
Relations



**Kylie Ormrod**  
Te Whatu Ora  
Co-Leader Localities



**Diane Koti**  
Te Aka Whai Ora  
Co-Leader Localities



**Penelope Matsis**  
Te Whatu Ora Team  
Administrator



**Lucie Thyne**  
Te Whatu Ora  
Advisor



**Chanelle Armstrong**  
Te Whatu Ora  
Senior  
Communication



**Sharlaine Chee**  
Te Whatu Ora  
Localities  
Change Lead /  
Strategic Facilitator



**Leigh Manson**  
Te Whatu Ora  
Programme Manager



**Endine Dixon-Harris**  
Te Whatu Ora  
Senior Advisor  
Localities



**Teei Kaiaruna**  
Te Whatu Ora  
Principal  
Advisor –  
Localities Design



**Jean Fleming**  
Te Whatu Ora  
Localities Digital  
Enablement Lead



**Nicola Bird**  
Te Whatu Ora  
Senior Project  
Manager, Digital  
Enablement



**Charis Frethey**  
Te Whatu Ora  
Sector Engagement  
Advisor, Digital  
Enablement

## Boundary determination steps for each Iwi Māori Partnership Board area



### STEP ONE - Iwi Māori Partnership Board recommendations

Iwi Māori Partnership Board makes recommendations to Te Aka Whai Ora and Te Whatu Ora for locality boundaries in their rohe.



### STEP TWO - Local authority engagement

Te Whatu Ora will engage local authorities in that Iwi Māori Partnership Board area on locality boundaries.



### STEP THREE - Board initial boundary approval

Te Whatu Ora and Te Aka Whai Ora Boards agree on initial boundaries. Iwi Māori Partnership Boards recommendations and local authority discussions will be considered for each locality.



### STEP FOUR - Community and whānau voice

Whānau Māori and the community will be asked whether the initial boundary makes sense to them to ensure their collective voices inform the process. The area needs to have a local feel for the people that live there.



### STEP FIVE - Final boundary determination

Taking into consideration the IMPBs recommendations, local authority and community views, Te Whatu Ora and Te Aka Whai Ora agree and publish the final boundaries to meet the requirements of the Pae Ora Act. If the boundary has changed from the first recommendation, the IMPR will be included in this step.



**Kanita Nikora**  
Te Whatu Ora



**Jessica Sandbrook**  
Te Whatu Ora



# National localities team (2/2)

Eastern BOP Locality  
Te Tai Tairāwhiti Locality

Central Region  
Localities  
Development Advisor

Tuwharetoa Locality  
Whanganui Locality  
Porirua Locality

Central Region  
Localities  
Development Advisor

**Brianna Tekii**  
Te Whatu Ora  
Central Region  
Localities  
Development Advisor

Wairoa Locality  
Horowhenua Locality



**Ellie Berghan**  
Te Whatu Ora  
Northern Region  
Localities  
Development Advisor

Te Hiku o Te Ika Locality  
Ōtara / Papatoetoe Locality  
Hauraki Locality



**Stuart Barson**  
Te Whatu Ora  
Te Waipounamu Region  
Localities  
Development Advisor

Hokonui Locality  
West Coast Locality



**Hayley Buchan**  
Te Whatu Ora  
Central Region  
Localities  
Development Advisor

Currently on parental leave

**Te Whatu Ora**  
Health New Zealand

**Te Aka Whai Ora**  
Māori Health Authority

**More Information:**

**Pae Ora Act:Legislation**

**Te Aka Whai Ora**<https://www.teakawhaiora.nz>

**Te Whatu Ora**<https://www.tewhatauora.govt.nz>

**Contact us:**[localities@health.govt.nz](mailto:localities@health.govt.nz)